



Annual Full-Day Conference & Reception
City Winery, NYC
Friday, June 5th, 2026

 www.ahrmny.com

8:30 am - 4:00 pm - Conference

4:00 pm - 6:30 pm - Reception

CONFERENCE THEME:
Risks Associated with
Human Capital and the
Correlation with
Patient-Centered Care

Communication Cultural sensitivity
 Customization
 Collaboration
 Quality and safety
 Individualization Emotional support
 Respect
 Empathy
 Timely care

Clinician well-being is a critical—and often overlooked—driver of safety, performance, and liability. Drawing on two decades of research and large-scale implementation, Dr. Krasner shows how burnout, moral distress, and the absence of psychological safety function as systemic risk factors with direct implications for patient outcomes and organizational exposure.

Strong policies don't prevent harm—alignment does. Kiki Orski exposes how unclear ownership, cross-functional disconnects, and inconsistent execution create hidden vulnerabilities across healthcare systems. Grounded in behavioral science, the session equips leaders to recognize misalignment and strengthen accountability across teams.

KEYNOTE SPEAKERS



Michael Krasner, MD
 EmPRO
 Insurance Company



Kiki Orski, MBA, RN
 Peak Performance
 Consulting

Hot Topic Breakout Sessions

Burnout in
Healthcare Risk
Management
Environments

3rd and 4th
Victims Identified
in Healthcare
Safety

Improving
Decisions,
Communication
& Outcomes

How Unmanaged
Risk Undermines
Performance

Workplace
Violence and the
SAVE Act

Mental Health
and
Wellness

Networking Reception on the Pier
Immediately Following Conference



QUESTIONS - Contact us at:
ahrmny@gmail.com

THANK YOU ANNUAL CONFERENCE SPONSORS

PLATINUM SPONSORS



Barker Patterson Nichols
STATHATOS-FULGIERI, BRAVERMAN, CHRISOMALLIDES, SINGER,
WEINSTOCK, COVITT, LAWLESS, MORALES



M2 LIABILITY SOLUTIONS
Representing MLMIC & MedPro Group
Berkshire Hathaway Companies



GOLD SPONSORS



FULLERTON BECK LLP
Defending healthcare providers in malpractice cases



**SHAUB AHMUTY
CITRIN & SPRATT**

SILVER SPONSORS



FUMUSO CHRISTESEN LLP

HPM&B
HEIDELL, PITTONI, MURPHY & BACH, LLP



BRONZE SPONSORS

BARTLETT LLP



WDL D
Wagner, Dornan, Leto & Di Leo, P.C.



EXHIBITORS



PRAESIDIUM



8:30-9:15 Registration and Breakfast

Check in early, grab breakfast, and enjoy some time catching up with friends and colleagues.

9:15-9:40 Welcome & Announcements



Wilhemina Nyarko
AHRMNY President

Welcome attendees, guests speakers, and sponsors. A rundown of the day's agenda and opportunity to hear from a few of our sponsors.

9:40-10:30 MORNING KEYNOTE ADDRESS: Flourishing Clinicians, Safer Systems: The Hidden Risk Imperative in Modern Healthcare



Michael (Mick) Krasner, MD, FACP
Co-Chief Medical Officer and Vice President of Education
EmPRO Insurance Company

Professor Emeritus of Medicine
University of Rochester School of Medicine and Dentistry

This session distills the evidence linking clinician distress to communication failures, medical error, workforce loss, and rising costs - while highlighting how cultures of presence, teamwork, and meaning protect performance. Attendees will be encouraged to move beyond narratives that separate “well-being” from “system performance” and invites healthcare risk management leaders to widen their lenses: to see costs of burnout, the measurable benefits of psychologically safe and engaged teams, and how their own influence in shaping environments where clinicians and systems either struggle or thrive.

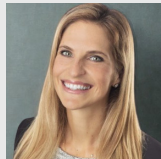
10:30-10:40 BREAK & TRANSITION TO MORNING BREAKOUT SESSIONS

MORNING BREAKOUT SESSIONS

10:40-11:30 Unpacking Burnout in the Emergency Room: Its Impact on Physicians, the Care Environment, and Potential Solutions



Sasha Sagalovich, Esq.
Assistant Vice President
Gallagher Bassett



Lara Vanyo, M.D.
Assistant Professor of Emergency Medicine
Weill Cornell Medical College



Christie Nunn, Esq.
Assistant Vice President, Claims Counsel
Sompo



Alison O'Dwyer, Esq.
Partner
Fullerton Beck, LLP

Emergency medicine faces unparalleled pressure—leading all specialties in patient volume, acuity, and malpractice exposure—and consequently carries the highest rate of physician burnout. This panel will explore the key drivers of burnout in the emergency department and the impact on both clinicians and patients. Speakers will examine how burnout contributes to challenges in treatment, outline the current malpractice landscape, and discuss how emerging tools, including AI, can help reduce workload and improve well-being. The session will also highlight practical strategies such as mentorship and organizational support to strengthen resilience and promote physician wellness.

10:40-11:30 Ripple Effects of Harm: Unmasking the 3rd and 4th Victims in Healthcare Safety



Abdel Disomimba
BSN, MSH, Fisqua, CLSSGB, CPHQ, CPPS
Associate Director, Risk Management
NYCHHC / Harlem Hospital



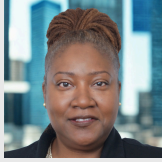
Alison Thompsen, RN, MSN, CPHRM
Director, Risk Management
NYCHHC / Harlem Hospital

Harm in healthcare rarely stops with the patient. Adverse events quietly affect leaders, risk managers, and safety professionals who carry the emotional and operational weight of supporting both patients and staff. This session examines these often overlooked “third and fourth victims,” showing how repeated exposure to harm can erode decision-making, strain teams, and weaken safety culture. Through real-world cases and emerging evidence, participants will explore the hidden burdens of safety work and learn practical strategies to protect, sustain, and empower those tasked with protecting others—reframing harm as a systemwide experience that demands compassionate, resilient leadership.

11:30-11:40 BREAK & TRANSITION TO MID-MORNING BREAKOUT SESSIONS

MID-MORNING BREAKOUT SESSIONS

11:40-12:30 Let's Talk Success: Buy in or Burn Out



Jenelle Arnao, DHS, MS, CPHRM
Certified Risk Management
Professional



Anne Huben-Kearney
DFASHRM, CPHRM, CPHQ, CPPS
Independent Risk and Patient Consultant

Midway through 2026, risk professionals continue to face rising adverse events, workforce strain, and persistent cybersecurity threats—all while 77% report emotional exhaustion. When risk leaders are depleted, incident investigations, claims management, and organizational protection suffer, increasing exposure to litigation and reputational harm. This session examines the key drivers of burnout and turnover among risk professionals and highlights evidence-based strategies to restore clarity, capacity, and influence—helping risk teams reclaim their value, voice, and vision.

11:40-12:30 Where Risk Really Lives: Improving Decisions, Communication and Outcomes



Peggy Cooke, JD
Founder
Peggy Cooke, LLC

Many patient-harm events stem not from system failures but from human ones—hesitation, silence, miscommunication, and rushed decisions. As evidence grows linking strong human capital to safer care, the risks tied to burnout and low psychological safety often remain hidden. This session positions human capital as a core risk variable and performance driver. Using a four-lever framework—mindset, communication clarity, influence, and decision discipline—we'll show how thinking under pressure and speaking up across hierarchy shape safety and outcomes. Participants will learn where human-driven risk emerges and how targeted investment yields better decisions, stronger collaboration, fewer errors, and improved patient results.

12:30-1:30 LUNCH BREAK

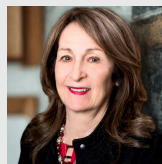
1:30-1:50 Annual Business Meeting / ASHRM Update

Annual election results will be announced, local chapter updates, ASHRM updates, and other announcements.

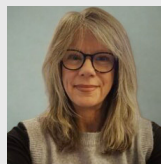
1:50-2:00 BREAK & TRANSITION TO AFTERNOON BREAKOUT SESSIONS

AFTERNOON BREAKOUT SESSIONS

2:00-2:50 Unseen Impact: Identifying and Managing Vicarious Trauma



Carolyn Reinach Wolf, Esq.
Executive Partner
Abrams Fensterman



Elizabeth Eckhardt, LCSW, PhD
Director
Nassau County Bar Association's
Lawyer Assistance Program

Vicarious trauma can quietly build over time, affecting performance, decision-making, and overall wellness. This session will identify key red flags and walk through a comprehensive Wellness and Mental Health Toolkit that equips participants with strategies to protect their mental health and sustain meaningful work.

2:00-2:50 Under Attack: Addressing Healthcare Workplace Violence and the SAVE Act



Doreen Dufficy, Esq.
Partner
Barbiero, Bisch, O'Connor & Commander, LLP



Jennifer W. Yuen, Esq.
Partner
National Co-Chair of the Traumatic Brain Injury Practice
Lewis Brisbois

Workplace violence in healthcare has reached a crisis point, with clinicians five times more likely to be injured than workers in other industries—fueling burnout and worsening staffing shortages. This session reviews the current landscape of violence against healthcare workers and introduces the bipartisan Save Healthcare Workers Act (H.R. 3178/S. 1600), which would establish federal criminal penalties for knowingly assaulting or intimidating hospital personnel. We will also examine New York's recent requirements for enhanced workplace-violence prevention programs and their implications for risk managers. Attendees will leave with clear, actionable insight into emerging federal and state protections and how to strengthen institutional strategies for a safer, more sustainable work environment.

2:50-3:00 BREAK & TRANSITION TO AFTERNOON KEYNOTE ADDRESS

3:00-3:50 AFTERNOON KEYNOTE ADDRESS:
The Hidden Risk No One is Managing



Kiki Orski, MBA, RN
President
Peak Performance Consulting

This keynote session challenges healthcare risk management and legal professionals to rethink where risk originates, shifting focus from policy gaps and compliance and compliance to the operational reality of misalignment. Most healthcare organizations have strong procedures in place. Preventable events happen anyway; not because people lack policies but because they lack alignment. Drawing on behavioral science and the Silo Solution framework, this session exposes the hidden cost of fractured ownership, cross-functional disconnects, and inconsistent execution across clinical, administrative, operational and legal teams.

3:50-4:00 WRAP UP AND CLOSING REMARKS



TICKET PRICES

- \$175 - Current AHRMNY Member
- \$225 - Nonmember
- \$200 - Conference/Membership Bundle
(Nonmembers that wish to join AHRMNY may purchase this ticket and receive a discount on their conference fee)

FINANCIAL AID INFORMATION

[Click here for AHRMNY's Financial Aid Policy](#)

CONTINUING EDUCATION CREDITS:

CEUs and CLEs for this program is pending review by the American Society for Health Care Risk Management and the New York State CLE Board.

DIRECTIONS TO CITY WINERY NEW YORK

City Winery is located at 25 11th Avenue @ Pier 57, New York, NY 10011

From Bronx, Brooklyn, Queens, Penn Station, or Port Authority, take A, C, or E trains to 14th Street / 8th Avenue Station.

May also take the L train from Brooklyn and Union Square Station. Exit at 15th Street and head northwest on West 15th Street until 10th Avenue. Turn left on 10th Avenue and make 3 right turns and 1 left turn. City Winery will be on the right.

From Bronx, Brooklyn, Queens, Grand Central Station, Penn Station, or Port Authority, take 4, 5, 6, L, N, R and Q trains to 14th Street Union Square Station. Exit station and take M14D-SBS (Chelsea Piers) bus to 10th Avenue / W15th Street stop. Walk one block to 11th Avenue. City Winery will be on the right.

NEARBY HOTELS RECOMMENDED BY CITY WINERY

- Dream Downtown, 355 West 16th Street (near 9th Ave), New York NY 10011
- Gansevoort, 18 Ninth Avenue (at 13th Street), New York, NY 10014
- The Standard-High Line, 848 Washington Street, New York, NY 10014



PARKING

Parking is available through MPG Parking at Pier 57. A 10% parking discount is available when booking online or on the APP - enter code Wine23 to apply discount. <https://mpgparking.com/>

There is also metered parking on the side streets along 14th-16th streets on 10th avenue going east.